



# GAT MONTHLY MEMBERSHIP PROGRESS REPORT

Results as of: 5/31/2022

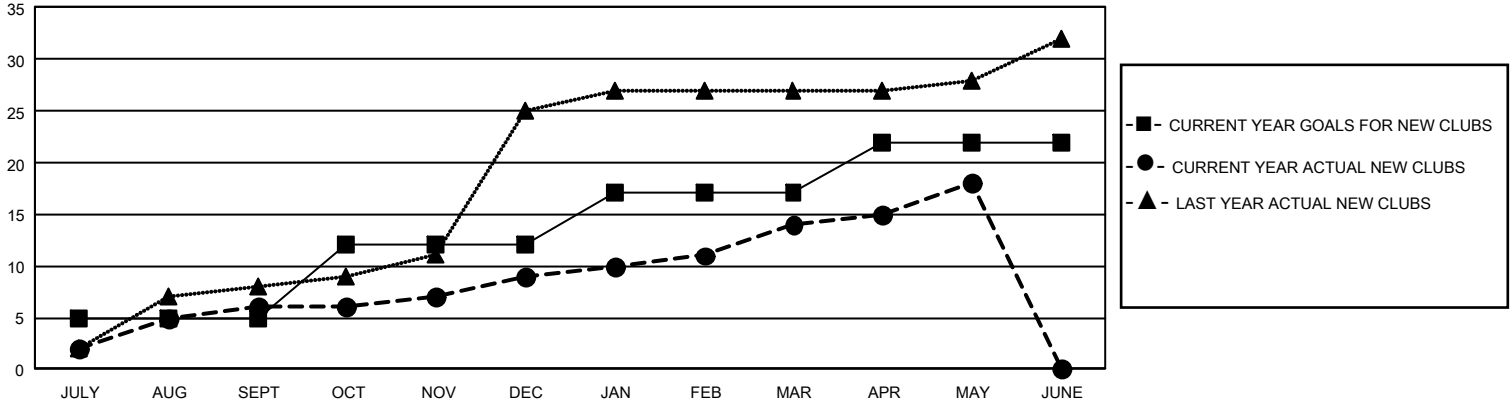
## GMT Constitutional Area 3, Group D

REPORT DOES NOT INCLUDE CLUBS IN UNDISTRICTED AREAS.

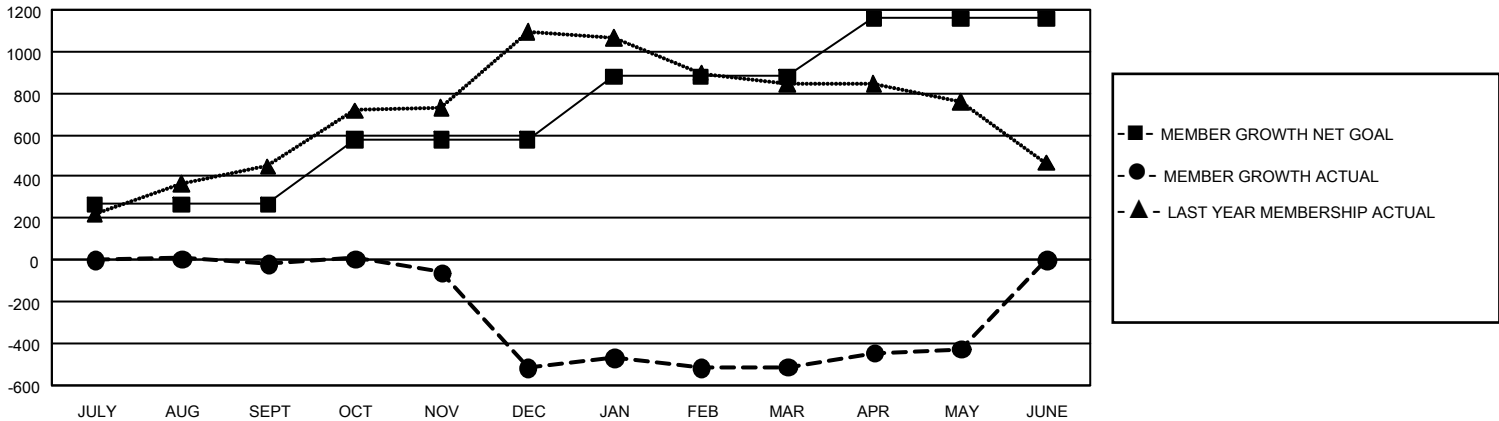
Clubs			
RESULTS FOR 2021-2022			
QUARTER	NEW CLUB GOAL	NEW CLUBS	DROPPED CLUBS
JULY/AUG/SEPT	15	6	9
OCT/NOV/DEC	21	3	9
JAN/FEB/MAR	15	5	7
APR/MAY/JUNE	15	4	0

Members			
RESULTS FOR 2021-2022			
QUARTER	MEMBER GROWTH NET GOAL	MEMBER GROWTH ACTUAL	DROPPED MEMBERS ACTUAL (including transfers)
JULY/AUG/SEPT	266	589	578
OCT/NOV/DEC	313	582	989
JAN/FEB/MAR	301	351	306
APR/MAY/JUNE	278	373	262

GOALS AND ACTUAL NEW CLUBS CUMULATIVE



GOALS AND ACTUAL MEMBERS CUMULATIVE



DROPPED CLUBS: 25	338 CLUBS OF 588 ADDED 1 OR MORE NEW MEMBERS	<u>GENDER DISTRIBUTION</u>	
<u>DROPPED MEMBERS</u>		MALE	5,332 (44.77%)
DECEASED	119	FEMALE	6,579 (55.23%)
CLUB CANCELLED	340	NON BINARY	0 (0.00%)
OTHER	1,652	PREFER NOT TO ANSWER	0 (0.00%)
<b>TOTAL</b>	<b>2,111</b>	TOTAL FAMILY UNIT MEMBERS	4,282
	<a href="#">CLICK HERE FOR CUMULATIVE MEMBERSHIP DATA</a>	FAMILY MEMBERS PAYING HALF DUES	2,475